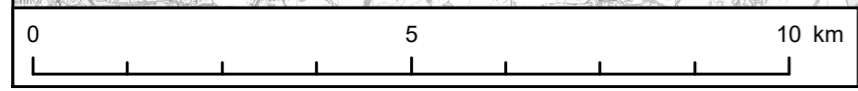
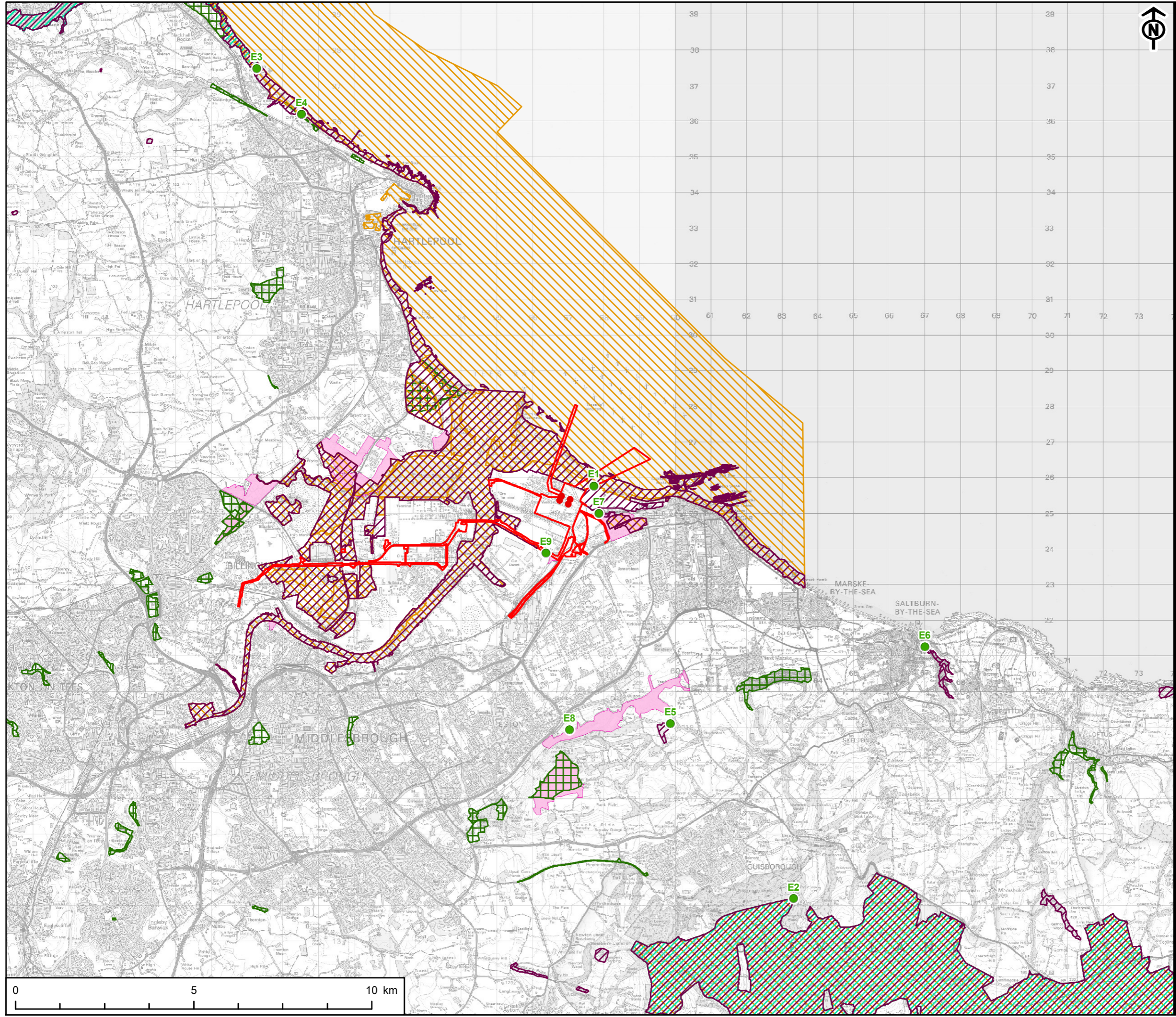




KEY

- Site Boundary
- Emission Source
- Ecological Receptor
- E1 - Teesmouth and Cleveland Coast Ramsar, SPA, SSSI
- E2 - North York Moors SAC, SPA, SSSI
- E3 - Northumbria Coast Ramsar, SPA
- E4 - Durham Coast SAC
- E5 - Lovell Hill Pools SSSI
- E6 - Saltburn Gill SSSI
- E7 - Coatham Marsh
- E8 - Wilton Woods
- E9 - Eston Pumping Station
- Site of Special Scientific Interest
- Special Area of Conservation
- Special Protection Area
- Local Nature Reserve
- Local Wildlife Site



This drawing has been produced for the use of AECOM's client. It may not be used, modified or relied upon by third parties, except as agreed by AECOM or as required by law. AECOM accepts no responsibility, and denies any liability whatsoever, to any party that uses or relies upon this drawing without AECOM's express written consent. All dimensions are indicative and in metres unless otherwise noted. Do not scale this document.